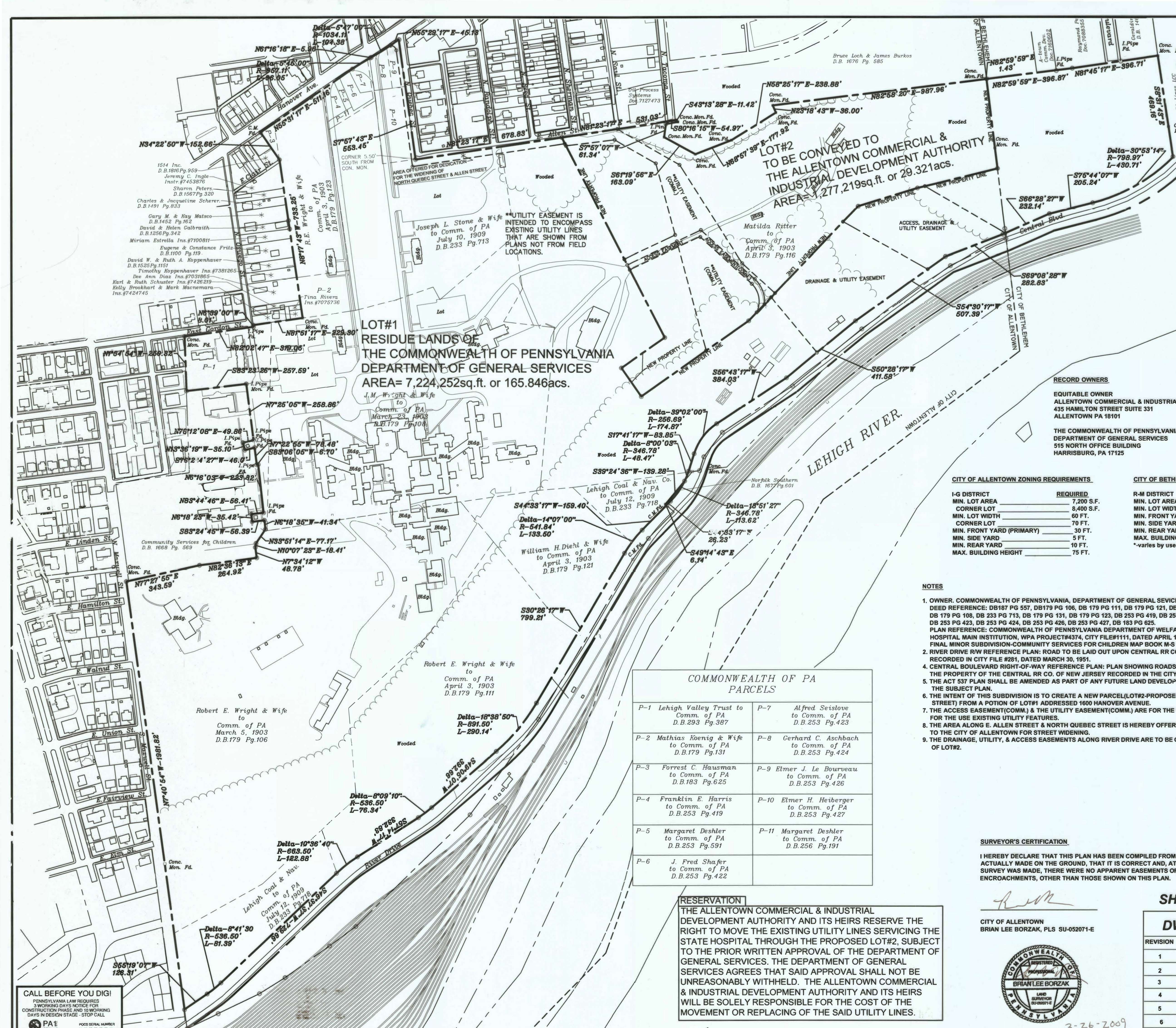


**Attachment J – Form of Easement for Air Monitoring Station**



**CERTIFICATION OF OWNER OF RECORD AND DEDICATION**

WE, THE UNDERSIGNED, BEING THE OWNERS IN PEACEFUL POSSESSION OF THE LAND HEREIN PLATTED AND BEING THAT THERE ARE NO SUITS PENDING AFFECTING THE TITLE OF THE SAME, DO HEREBY ADOPT THIS PLAN OF PROPERTY SITUATED IN THE CITY OF ALLENTOWN, LEHIGH COUNTY, PA, AND DEDICATED TO THE USE OF THE PUBLIC FOREVER ALL LAND FOR PUBLIC PURPOSES SHOWN HEREON.

THE FOREGOING ADOPTION AND DEDICATION IS MADE BY US WITH THE FULL UNDERSTANDING AND AGREEMENT THAT THE APPROVAL BY THE ALLENTOWN CITY PLANNING COMMISSION, IF HERETO ATTACHED, WILL BECOME NULL AND VOID UNLESS THIS PLAN IS RECORDED IN THE RECORDER OF DEEDS OFFICE OF LEHIGH COUNTY, PA, WITHIN NINETY (90) DAYS OF THE DATE OF SAID APPROVAL.

*Brian Lee Borzak*  
THE COMMONWEALTH OF PENNSYLVANIA  
SWORN AND SUBSCRIBED TO BEFORE ME THIS 2nd DAY OF May, 2009

*Tom S. Hoover*  
NOTARY PUBLIC

*R. Scott Unger*  
R. Scott Unger Executive Director ACIDA(Equitable Owner of Lot#2)  
SWORN AND SUBSCRIBED TO BEFORE ME THIS 14 DAY OF April, 2009

*Martha Col*  
NOTARY PUBLIC

**COMMONWEALTH OF PENNSYLVANIA**  
Notary Public  
Martha Cox, Notary Public  
City of Allentown, Lehigh County  
My Commission Expires Oct. 5, 2015  
Member, Pennsylvania Association of Notaries

**PLANNING APPROVAL**  
THE WITHIN PLOT OR PLAN LOCATED IN ALLENTOWN, LEHIGH COUNTY, PA, WAS APPROVED BY THE ALLENTOWN CITY PLANNING COMMISSION.

*Michael J. Zupke* 5/26/09  
CHAIRMAN DATE

*David P. Berryman* 5/6/09  
PLANNING DIRECTOR DATE

*Bill* 4/8/09  
SECRETARY DATE

*Bill* 4/8/09  
CITY ENGINEER DATE

**L.V.P.C. REVIEW**  
REVIEWED BY THE LEHIGH VALLEY PLANNING COMMISSION

*David P. Berryman* 5/07/09  
PLANNER DATE

**CERTIFICATION OF RECORDING**

RECORDED IN THE OFFICE OF THE RECORDER OF DEEDS FOR LEHIGH COUNTY, PENNSYLVANIA, IN DOCUMENT I.D. NO. 2009 01731 ON May 8, 2009

WITNESS MY HAND AND SEAL OF OFFICE THIS 8 DAY OF May, 2009

*Andrea E. Naugle*  
RECORDER OF DEEDS

*Jessica Smith Deputy*  
Deputy

**SHEET 1 OF 2**

**DWG#06-005**

REVISION	DATE	COMMENT
1	10-01-2007	
2	10-04-2007	Distance Edit
3	10-05-2007	DGS REVIEW
4	1-21-2009	SHEET 2
5	2-02-2009	State Comm.
6	2-09-2009	CITY REVIEW
7	3-25-2009	CITY REVIEW

**FINAL SUBDIVISION PLAN**

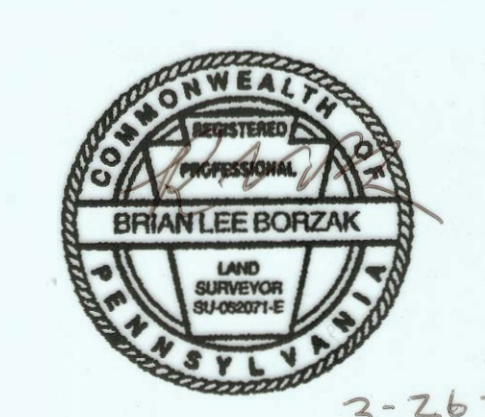
OF

**ALLENTOWN STATE HOSPITAL**

1600 HANOVER AVENUE  
15th WARD, CITY OF ALLENTOWN AND  
THE CITY OF BETHLEHEM, LEHIGH COUNTY, PENNSYLVANIA

SCALE: 1" = 200' DATE: JULY 20, 2007

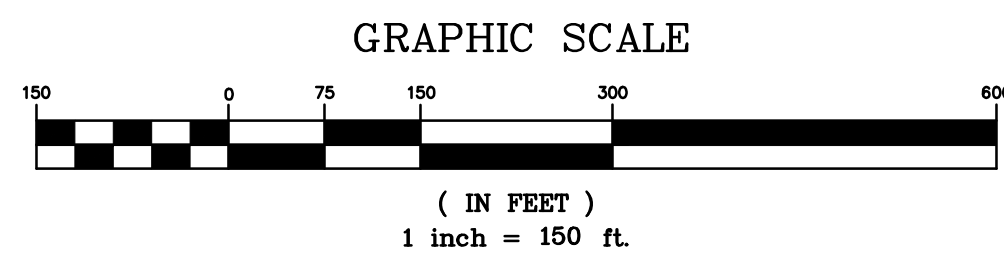
**CITY OF ALLENTOWN**  
**BUREAU OF ENGINEERING, DEPARTMENT OF PUBLIC WORKS**  
641 S. 10TH ST. ALLENTOWN, PA 18103-3173 610-437-7574





- LEGEND:**
- 400 — EXISTING MAJOR CONTOURS (POST CONSTRUCTION)
  - 402 — EXISTING MINOR CONTOURS (POST CONSTRUCTION)
  - — — PROPERTY LINE
  - — — BUILDING OUTLINE
  - — — BUILDINGS TO BE REMOVED
  - — — BUILDINGS NOT IN CONTRACT
  - — — EDGE OF PAVEMENT
  - — — CONCRETE SIDEWALKS
  - — — EXISTING TUNNEL LOCATIONS

- NOTES:**
1. AERIAL PHOTOGRAPH AND TOPOGRAPHY WERE OBTAINED BY DRONE SURVEY PERFORMED BY EARTHRES GROUP, INC. AUGUST 2021.
  2. SITE FEATURES WERE OBTAINED FROM A FIELD SURVEY PERFORMED BY EARTHRES GROUP, INC. JANUARY 2020.
  3. EXISTING BUILDING LOCATIONS AND ASSOCIATED TABLE WERE REFERENCED FROM BUILDING LOCATION MAP, DRAWING NUMBER AR100, DRAWN BY KCI TECHNOLOGIES, INC. DATED 03/22/2019.



**VERIFY SCALE**

BAR IS ONE (1) INCH LONG ON ORIGINAL DRAWING:

0 1

IF BAR IS NOT ONE (1) INCH LONG, ADJUST SCALE ACCORDINGLY

CONTRACTOR SHALL FIELD VERIFY ALL DIMENSIONS. VARIANCE FROM CONTRACT DOCUMENTS NOT PERMITTED WITHOUT PROFESSIONAL & BUREAU OF CONSTRUCTION APPROVAL.


**RECORD REVISIONS**



PROFESSIONAL'S SEAL DATE

**EARTHRES GROUP, INC.**  
6912 OLD EASTON ROAD  
PIPERSVILLE, PENNSYLVANIA 18947

COMMONWEALTH OF PENNSYLVANIA  
DEPARTMENT OF GENERAL SERVICES  
HARRISBURG, PENNSYLVANIA

D.G.S PROJECT No. C-0501-0022

**ALLENTOWN STATE HOSPITAL**  
1600 HANOVER AVE  
ALLENTOWN, PA 18109

**OVERALL AERIAL AS-BUILT PLAN**

DRAWN BY JLD	DATE 10/15/21	DRAWING No. AB-001
CHECKED BY DFA	SCALE 1"=150'	

